

IJG Namibian Bond & Money Market Yield Curves

17 February 2025

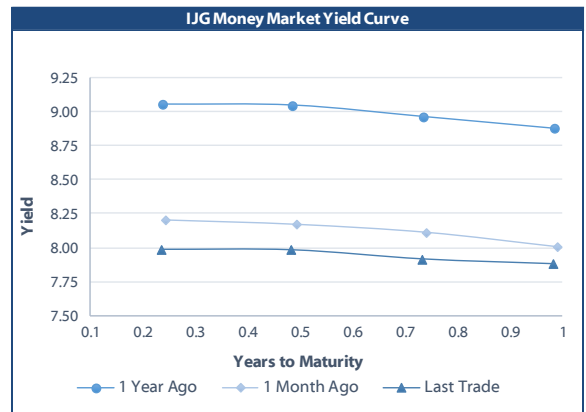


	Yield (%)		Latest premium (bps)	Benchmark	Modified Duration
	Close 14-Feb-25	Previous 07-Feb-25			
Government Bonds					
ALBI					5.797
GC25	7.360	7.525	0	GT363/17Apr25	0.159
GC26	8.496	8.426	21	R186	1.060
GC27	8.769	8.699	48	R186	1.728
GC28	9.030	8.995	-5	R2030	2.998
GC30	9.010	8.975	-7	R2030	3.938
GC32	10.015	9.965	54	R213	4.969
GC35	10.982	10.937	28	R209	6.248
GC37	11.213	11.173	32	R2037	6.788
GC40	11.516	11.501	40	R214	7.143
GC43	11.440	11.425	9	R2044	7.725
GC45	11.761	11.746	42	R2044	7.821
GC48	11.796	11.781	50	R2048	7.786
GC50	11.589	11.574	29	R2048	8.180
GI25	4.000	4.000			0.409
GI27	4.645	4.645			2.463
GI29	4.761	4.761			3.536
GI33	5.339	5.339			6.597
GI36	5.608	5.608			8.540
NAM04	9.695	9.625	141	R186	1.311
Parastatal & Corporate Bonds - Fixed Coupon					
BWFL26	8.385	8.315	10	R186	1.612
NEDX2030	8.265	8.195	91	GC25	0.037
Parastatal & Corporate Bonds - Floating Coupon					
BWJL25	8.458	8.458	90	3 month JIBAR	0.744
BWJf26S	9.058	9.058	150	3 month JIBAR	1.178
BWJ1e27	9.708	9.708	215	3 month JIBAR	1.939
BWJ2e27	7.558	7.558	0	3 month JIBAR	2.002
DBN29	9.958	9.958	240	3 month JIBAR	3.120
FNBj25S	9.008	9.008	145	3 month JIBAR	0.098
FNBj27S	9.288	9.288	173	3 month JIBAR	1.802
FNB34	9.508	9.508	195	3 month JIBAR	3.703
GDW26	9.758	9.758	220	3 month JIBAR	1.124
GDW28	10.058	10.058	250	3 month JIBAR	2.644
ORYJ25	10.058	10.058	250	3 month JIBAR	0.697
PNJ25	10.258	10.258	270	3 month JIBAR	0.531
PNJ26	10.808	10.808	325	3 month JIBAR	1.199
PNJ27	10.808	10.808	325	3 month JIBAR	2.104
PNJ29	10.258	10.258	270	3 month JIBAR	2.002
SBKN26	8.998	8.998	144	3 month JIBAR	1.289
SBNA26	8.928	8.928	137	3 month JIBAR	1.160
SBNG25	8.948	8.948	139	3 month JIBAR	0.378
SBNG27	9.248	9.248	169	3 month JIBAR	2.078
SBKN27	8.708	8.708	115	3 month JIBAR	2.018
LHNS01	10.508	10.508	295	3 month JIBAR	1.910
LHN02	10.358	10.358	280	3 month JIBAR	0.353
LBN29	9.758	9.758	220	3 month JIBAR	3.685
NEDJ2028	10.308	10.308	275	3 month JIBAR	2.431

Bank Rate		
	Current	Previous
Bank Rate	6.75	7.00
Prime	10.50	10.75

Treasury Bills		
	Current 17-Feb-25	Previous 10-Feb-25
T-Bill (91 day)*	7.653	7.760
T-Bill (182 day)*	7.768	7.831
T-Bill (273 day)*	7.798	7.839
T-Bill (365 day)*	7.798	7.878

* average nominal yields from the most recent primary auction



Average Bank Deposit		
	Current 17-Feb-25	Previous 10-Feb-25
Call	6.017	6.108
3 month	6.842	6.892
6 month	7.242	7.308
12 month	7.550	7.592

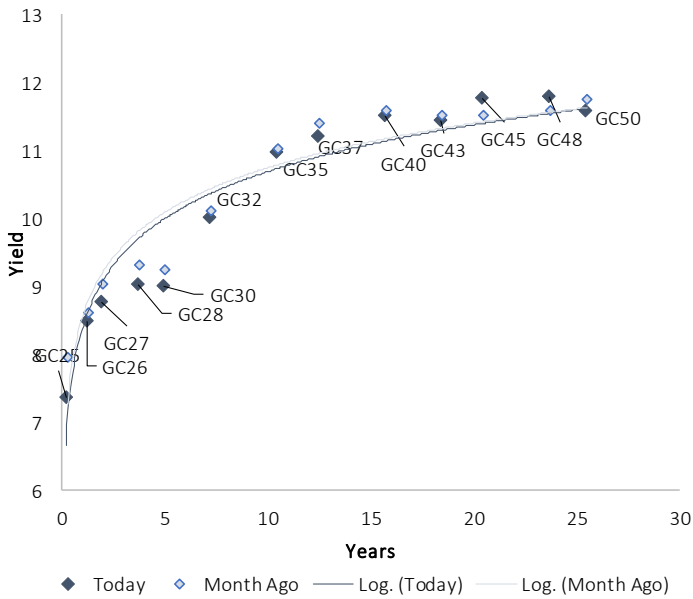
Average NCD Rates		
	Current 17-Feb-25	Previous 10-Feb-25
3 month	6.688	6.750
6 month	7.125	7.163
9 month	7.263	7.300
12 month	7.413	7.450
18 month	7.358	7.400
24 month	7.410	7.450
36 month	7.423	7.475
48 month	7.475	7.518
60 month	7.535	7.590



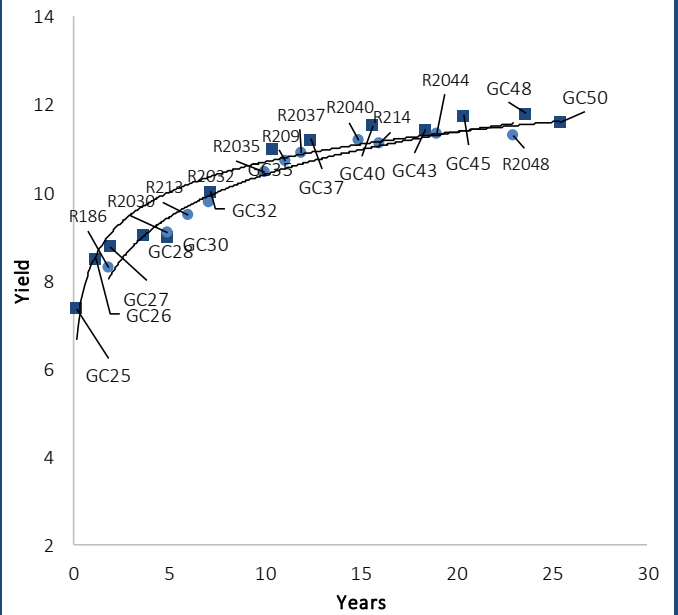
0.0003	13.04%
0.0001	50.00%
0.0003	14.29%
0.0005	12.50%

IJG Namibian Bond & Money Market Yield Curves – 17 February 2025

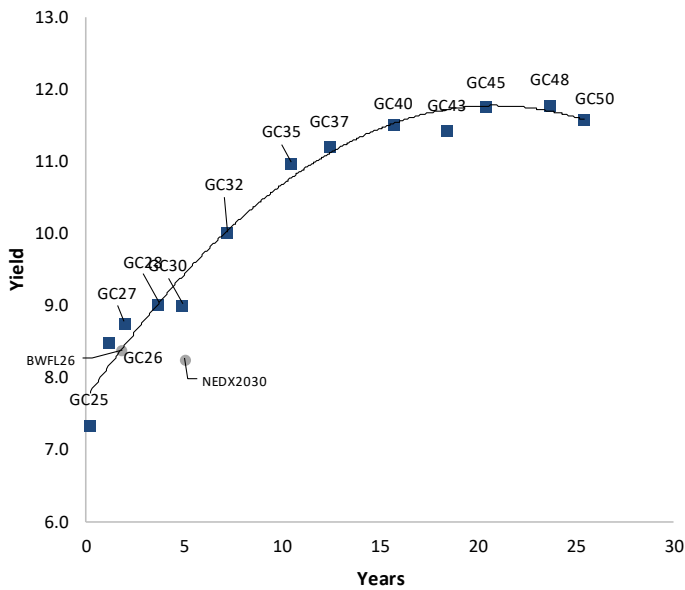
IJG Bond Yield Curve



IJG Bond Yield Curve versus SA Benchmarks (latest)



Corporate Bonds relative to IJG Bond Yield Curve



Total Domestic Debt Outstanding

	in N\$ bn	% of Total
Government	128,362	96%
Treasury Bills	42,318	33%
Bonds	86,044	63%
Corporate	5,151	4%
TOTAL	133,512	100%

Eurobond

US\$750m

ZAR Bond

R335m

IJG All Bond Index

End January 2025	379.17
End December 2024	376.17

IJG Money Market Index

End January 2025	288.17
End December 2024	286.28

Source: Bond Issuers, BoN, IJG



Namibian Debt in Issue

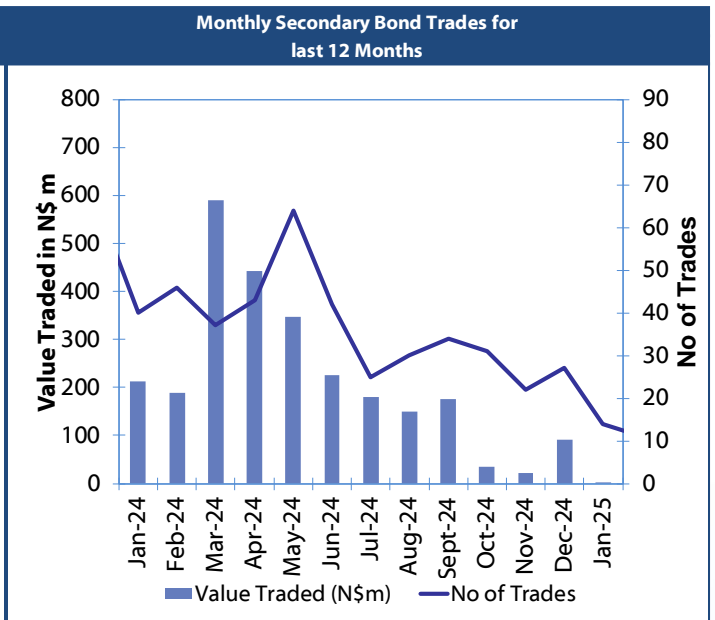
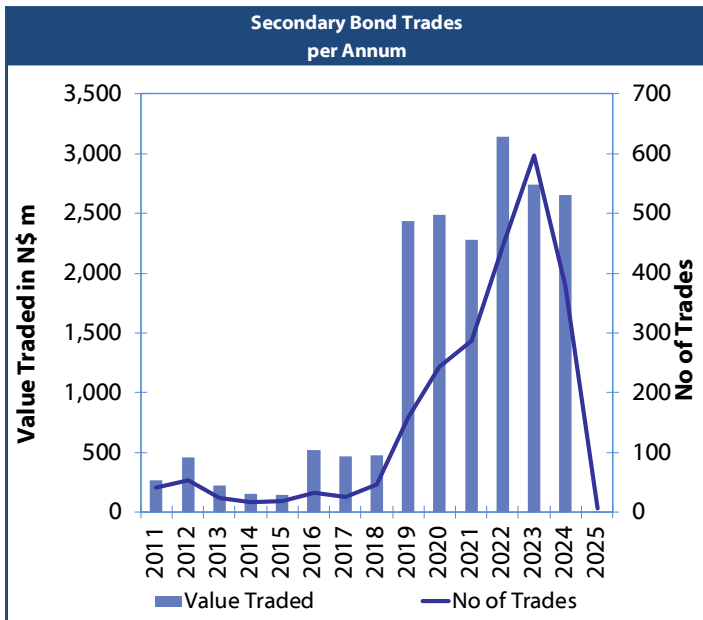
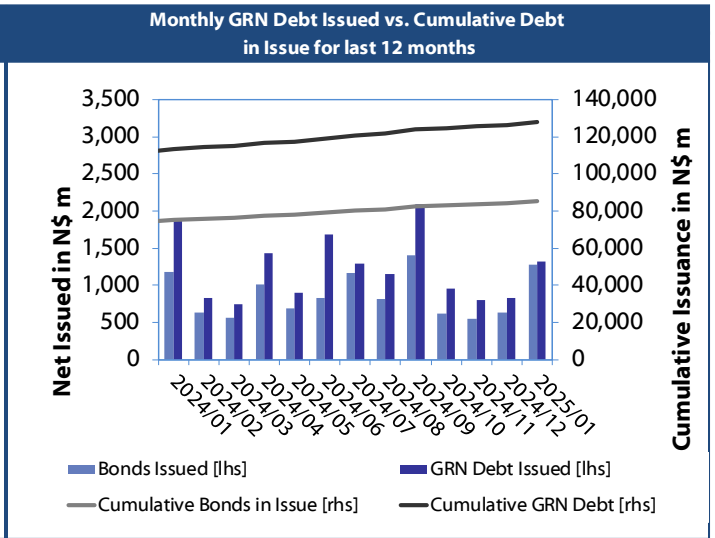
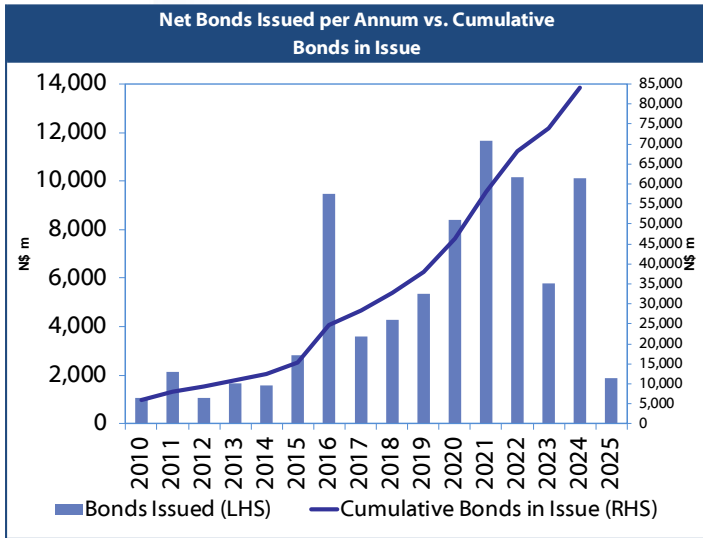
Government Bonds									
	Benchmark	Maturity Date	Coupon Rate	Coupon Date 1	Coupon Date 2	in N\$ m to date	YTM	Duration	Issue Date
GC25	GT363/17Apr25	15-Apr-25	8.50%	15-Apr	15-Oct	1,923	7.360	0.16	01-Aug-13
GC26	R186	15-Apr-26	8.50%	15-Apr	15-Oct	6,390	8.496	1.06	23-Jul-20
GC27	R186	15-Jan-27	8.00%	15-Jan	15-Jul	6,551	8.769	1.73	17-Feb-11
GC28	R2030	15-Oct-28	8.50%	15-Apr	15-Oct	4,604	9.030	3.00	24-May-22
GC30	R2030	15-Jan-30	8.00%	15-Jan	15-Jul	6,576	9.010	3.94	17-Feb-11
GC32	R213	15-Apr-32	9.00%	15-Apr	15-Oct	7,838	10.015	4.97	01-Aug-13
GC35	R209	15-Jul-35	9.50%	15-Jan	15-Jul	7,429	10.982	6.25	18-Jul-13
GC37	R2037	15-Jul-37	9.50%	15-Jan	15-Jul	6,651	11.213	6.79	15-Jul-14
GC40	R214	15-Oct-40	9.80%	15-Apr	15-Oct	6,717	11.516	7.14	15-Jul-14
GC43	R2044	15-Jul-43	10.00%	15-Jan	15-Jul	5,332	11.440	7.73	20-Jun-19
GC45	R2044	15-Jul-45	9.85%	15-Jan	15-Jul	6,330	11.761	7.82	21-May-15
GC48	R2048	15-Jul-48	10.00%	15-Jan	15-Jul	4,371	11.796	7.79	03-Jun-21
GC50	R2048	15-Jul-50	10.25%	15-Jan	15-Jul	5,635	11.589	8.18	06-Jun-19
GI25	None	15-Jul-25	3.80%	15-Jan	15-Jul	1,963	4.000	0.41	28-Aug-15
GI27	None	15-Oct-27	4.00%	15-Jan	15-Jul	1,388	4.645	2.46	03-Jun-21
GI29	None	15-Jan-29	4.50%	15-Jan	15-Jul	2,397	4.761	3.54	01-Jun-17
GI33	None	15-Apr-33	4.50%	15-Apr	15-Oct	2,211	5.339	6.60	28-Jun-18
GI36	None	15-Jul-36	4.30%	15-Jan	15-Jul	1,737	5.608	8.54	27-Jun-19
Eurobond 2*	10YUSBond	29-Oct-25	5.25%	29-Apr	29-Oct	750	6.544	0.66	29-Oct-15
NAM04**	R186	1-Aug-26	10.51%	01-Aug	01-Feb	335	9.695	1.31	01-Aug-16
Total Gov Bonds (Domestic):						86,044			
Corporate Bonds									
BWFL26	R186	4-Dec-26	8.80%	04-Jun	04-Dec	100	8.385	1.61	04-Dec-23
BWJL25	3m JIBAR	2-Dec-25	8.95%	02-Mar/02-Jun	02-Sep/02-Dec	350	8.458	0.74	02-Dec-20
DBN29	3 month JIBAR	5-Mar-29	10.19%	28-Feb/31-May	31-Aug/30-Nov	130	9.958	3.12	04-Mar-22
NEDX2030	GC25	28-Feb-25	10.21%	28-Feb	31-Aug	50	8.265	0.04	28-Feb-18
BWJf26S	3m JIBAR	2-Jun-26	9.29%	19-May/19-Aug	19-Nov/19-Feb	227	9.058	1.18	02-Jun-21
BWJ1e27	3m JIBAR	19-May-27	10.04%	19-May/19-Aug	19-Nov/19-Feb	500	9.708	1.94	19-May-17
BWJ2e27	3m JIBAR	19-May-27	7.89%	19-May/19-Aug	19-Nov/19-Feb	300	7.558	2.00	19-May-17
FNBj25S	3m JIBAR	23-Mar-25	9.23%	23-Mar/23-Jun	23-Sep/23-Dec	241	9.008	0.10	23-Mar-22
FNBj27S	3m JIBAR	23-Mar-27	9.51%	23-Mar/23-Jun	23-Sep/23-Dec	112	9.288	1.80	23-Mar-22
FNB34	3m JIBAR	3-Dec-29	9.74%	03-Mar/03-Jun	03-Sep/03-Dec	500	9.508	3.70	03-Dec-24
GDW26	3m JIBAR	15-May-26	9.99%	03-Mar/03-Jun	03-Sep/03-Dec	150	9.758	1.12	15-May-23
GDW28	3m JIBAR	15-May-28	10.29%	03-Mar/03-Jun	03-Sep/03-Dec	100	10.058	2.64	15-May-23
ORYJ25	3m JIBAR	18-Nov-25	10.43%	18-Feb/18-May	18-Aug/18-Nov	249	10.058	0.70	18-Nov-22
SBKN26	3m JIBAR	13-Jul-26	9.17%	24-Aug/24-Nov	24-Feb/24-May	297	8.998	1.29	13-Jul-21
SBNA26	3m JIBAR	25-May-26	9.16%	24-Aug/24-Nov	24-Feb/24-May	156	8.928	1.16	24-May-21
SBNG25	3m JIBAR	7-Jul-25	9.14%	05-Jan/05-April	05-Jul/05-Oct	200	8.948	0.38	05-Jul-22
SBNG27	3m JIBAR	5-Jul-27	9.44%	05-Jan/05-April	05-Jul/05-Oct	200	9.248	2.08	05-Jul-22
SBKN27	3m JIBAR	7-Jun-27	8.94%	07-Sep/07-Dec	07-Mar/07-June	150	8.708	2.02	07-Jun-24
LHNS01	3m JIBAR	17-May-27	10.88%	17-Aug/17-Nov	17-Feb/17-May	260	10.508	1.91	17-May-24
LHN02	3m JIBAR	29-Jun-25	10.58%	29-Mar/29-Jun	29-Sept/29-Dec	200	10.358	0.35	29-Jun-22
LBN29	3m JIBAR	5-Dec-29	9.99%	05-Mar/05-Jun	05-Sept/05-Dec	300	9.758	3.68	05-Dec-24
NEDJ2028	3m JIBAR	28-Feb-28	10.54%	28-May/28-Aug	28-Nov/28-Feb	50	10.308	2.43	28-Feb-18
PNJ25	3m JIBAR	16-Sep-25	10.49%	16-March/16-Jun	16-Sep/16-Dec	30	10.258	0.53	16-Sept-22
PNJ26	3m JIBAR	18-Jun-26	11.03%	24-Aug/24-Nov	24-Feb/24-May	25	10.808	1.20	18-Jun-21
PNJ27	3m JIBAR	16-Sep-27	11.04%	16-March/16-Jun	16-Sep/16-Dec	100	10.808	2.10	16-Sept-22
PNJ29	3m JIBAR	18-Jun-27	10.48%	18-Sep/18-Dec	18-Mar/18-June	175	10.258	2.00	18-Jun-24
Total Corporate Bonds (Domestic):						5,151			
TOTAL DEBT in TBs						42,318			
TOTAL DOMESTIC DEBT						133,512			

* Value in US\$ m

** Value in ZAR m

Source: Bond Issuers, BoN, NSX, IJG

0.0003	13.04%
0.0001	50.00%
0.0003	14.29%
0.0005	12.50%



Source: BoN, NSX, IJG



IJG Holdings

Mathews Hamutenya	Group Chairman		Tel: +264 (61) 256 699
Mark Späth	Group Managing Director	mark@ijg.net	Tel: +264 (81) 958 3510
Helena Amutenya	Group Financial Director	helena@ijg.net	Tel: +264 (81) 958 3528
Leonie De Klerk	Group Compliance Officer	leonie@ijg.net	Tel: +264 (81) 958 3533
Tashiya Josua	Financial Manager	tashiya@ijg.net	Tel: +264 (81) 958 3511
Benita Windisch	Financial Manager	benita@ijg.net	Tel: +264 (81) 958 3539
Lynnet Sasele	Financial Accountant	lynnet@ijg.net	Tel: +264 (81) 958 3536
Counney Kemp	Group PA	reception@ijg.net	Tel: +264 (81) 958 3500

IJG Securities

Leon Maloney	Equity & Fixed Income Dealing	leon@ijg.net	Tel: +264 (81) 958 3512
Maria Amutenya	Settlements & Administration	maria@ijg.net	Tel: +264 (81) 958 3515
Zane Feris	Sales and Research	zane@ijg.net	Tel: +264 (81) 958 3543
Kari Rossouw	Sales and Research	kari@ijg.net	Tel: +264 (81) 958 3530
Robin Sherbourne	Economist	robin@ijg.net	Tel: +264 (81) 958 3500

IJG Wealth Management

Andri Ntema	Managing Director	andri@ijg.net	Tel: +264 (81) 958 3518
Wim Boshoff	Head Wealth Manager	wim@ijg.net	Tel: +264 (81) 958 3537
Aretha Thiart	Wealth Manager	aretha@ijg.net	Tel: +264 (81) 958 3540
Katja Greeff	Wealth Manager	katja@ijg.net	Tel: +264 (81) 958 3538
Wetu Ishtile	Junior Wealth Manager	wetu@ijg.net	Tel: +264 (81) 958 3500
Maunda Rautenbach	Head of Operations	maunda@ijg.net	Tel: +264 (81) 958 3529
Lorein Kazombaruru	Wealth Administration	lorein@ijg.net	Tel: +264 (81) 958 3521
Francoise Van Wyk	Wealth Administration	francoise@ijg.net	Tel: +264 (81) 958 3513
Calvin Mwinga	Wealth Administration	calvin@ijg.net	Tel: +264 (81) 958 3514

IJG Capital

Jakob de Klerk	Managing Director	jakob@ijg.net	Tel: +264 (81) 958 3517
Mirko Maier	Senior Manager: Investments	mirko@ijg.net	Tel: +264 (81) 958 3531
Fares Amunkete	Senior Manager: Investments	fares@ijg.net	Tel: +264 (81) 958 3527
Peterson Mbise	Manager: Investments	peterson@ijg.net	Tel: +264 (81) 958 3532
Veripi Ngapurue	Senior Associate	veripi@ijg.net	Tel: +264 (81) 958 3500
Jacinda Lima	Associate	jacinda@ijg.net	Tel: +264 (81) 958 3500

IJG Investment Managers & IJG Unit Trusts

Chidera Onwudinjo	Portfolio Manager	chidera@ijg.net	Tel: +264 (81) 958 3523
Danie van Wyk	Portfolio Manager	danie@ijg.net	Tel: +264 (81) 958 3534
Joshua Sithole	Junior Research Analyst	joshua@ijg.net	Tel: +264 (81) 958 3523

IJG Advisory

Herbert Maier	Managing Director	herbert@ijg.net	Tel: +264 (81) 958 3522
Jolyon Irwin	Director	jolyon@ijg.net	Tel: +264 (81) 958 3500
Hugo van den Heever	Corporate Advisor	hugo@ijg.net	Tel: +264 (81) 958 3542
Lucas Martin	Corporate Advisory Associate	lucas@ijg.net	Tel: +264 (81) 958 3541

No representation is given about, and no responsibility is accepted, for the accuracy or completeness of this document. Any views reflect the current views of IJG Holdings (Pty) Ltd. The views reflected herein may change without notice. IJG Holdings (Pty) Ltd provides this document to you for information purposes only and should not be constructed as and shall not form part of an offer or solicitation to buy or sell securities or derivatives. It may not be reproduced, distributed or published by any recipient for any purposes.



**Independent. Focused.
Personalised.**